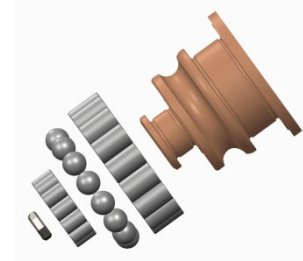
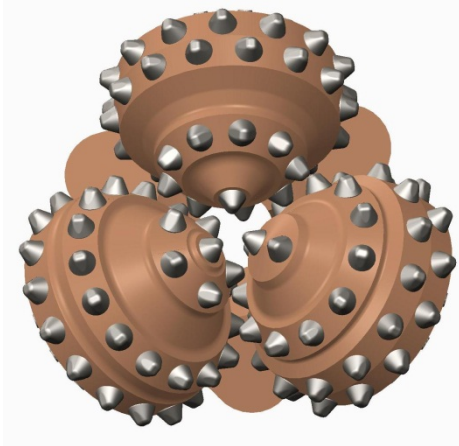


# 6 3/4" (6-2-1) (W5751)

## Product specification



### Product Features

- Chisel buttons on Gage
- 1/3<sup>rd</sup> Standard open bearing bit for soft to medium hard formations and moderately abrasive formations.

### Product Specifications

Size / Type	6 3/4"	Cutting structure	TCI
IADC	6-2-1	Rows	3- Gage / 9 – inner
Pin Connection	3 1/2" API Regular	Inserts count	43 – Gage / 71- Inner
Bearing	Ball Roller Friction	Gage inserts	Chisel
Circulation type	Centre Flush	Inner inserts	Chisel
Product weight	16kg	Gage Protection	1/3 <sup>rd</sup> Hard facing
Nozzle	-NA-	Shirttail protection	Serrated

### Operating parameters

Weight on Bit : 27,000 - 47,000 lbs.  
 Rotary Speed (RPM) : 50 – 120 RPM  
 Rock UCS : Between 25,000 to 45,000 PSI

*Operating parameters are typical ranges and may vary depending on ground conditions*