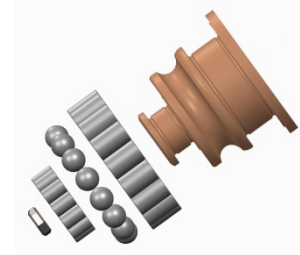
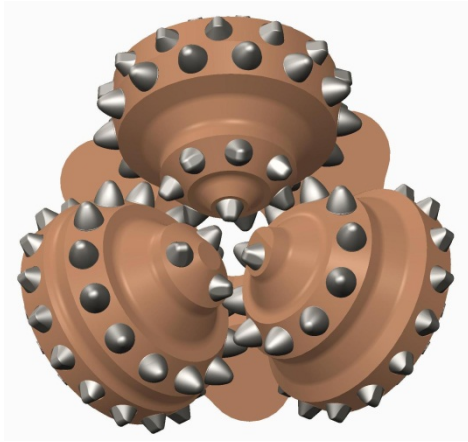


6 3/4" (5-2-1) (W5749)

Product specification



Product Features

- Chisel inserts on gage & inner rows
- 1/3rd shirrtail protection for soft to medium hard and moderately abrasive formations

Product Specifications

Size / Type	6 3/4"	Cutting structure	TCI
IADC	5-2-1	Rows	3- Gage / 7 – inner
Pin Connection	3 1/2" API Regular	Insert count	44 – Gage / 48- Inner
Bearing	Roller Ball Roller	Gage inserts	Chisel
Circulation type	Centre Flush	Inner inserts	Chisel
Product weight	16 kg	Shirrtail protection	1/3 rd Hard facing
Nozzle	-NA-	Shirrtail insert	Serrated

Operating parameters

Weight on Bit	: 20,000 – 43,500 lbs.
Rotary Speed (RPM)	: 50 – 150 RPM
Rock UCS	: Between 10,000 to 27,500 PSI

Operating parameters are typical ranges and may vary depending on ground conditions